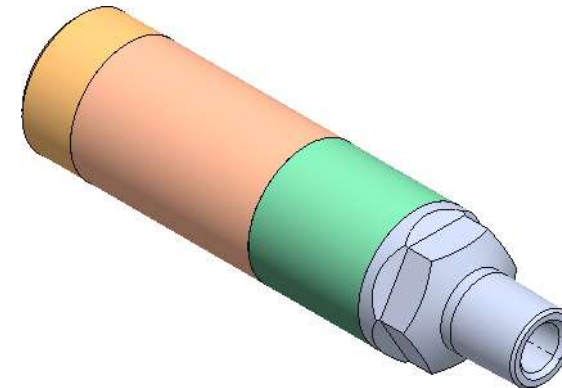


Sr	PART NUMBER	QTY	NAME	NOTES
1	102-20062-C	1	Sub, upper	
2	Z02490DV	3	O-Ring 024, 90D,Viton *	
3	102-20058-C	1	Housing, check	
4	102-20022-C	1	Seal, check valve *	
5	102-20059-C	1	Flow sub	
6	102-20060-C	1	Spring	
7	102-20057-C	1	Dart, check	
8	Z02690D	1	O-Ring, 026,90D,V *	
9	102-20061-C	1	Nose	
10	BKP025TFM	2	Ring, bkp, 025 TFM *	



Design specification			
Nominal OD	1.5"(38.1mm)	Factory acceptance	API119G2
Total length	6.08"(154 mm)		
Pressure rating	10KSI@300°F		

Alternatice positve check spring # 102-20063-C
 *-Redress items

ELC Energy Services LLC
 Proprietary note
 The information contained herein is the confidential property of ELC Energy Services LLC and its affiliates, it is to be used only for the benefit of LLC and should not be reproduced or used for any other purpose without written consent of ELC Energy Services LLC.

Material 17-4PH DH1150	
Heat treat NA	
Coating NA	
Weight Lb	
Drw: ZS	Changes from previous revision denoted by Δ
Ckd: MSJ	
App: ZS	
Date: 2/3/2023	

Title			
ELCZ-2 SCV check valve			
Unless otherwise specified			
All angles 45°		X. +/- 0.0063"	Fractional= +/- 1/64"
Thread entry/exit 45°		X.X +/- 0.025"	Angular +/- 0.5°
Dimensions in inches	Dimensions in () are in mm	X.XX +/- 0.010"	Surf. finish 0.125
		X.XXX +/- 0.005"	T.I.R. 0.005" max
Corners R0.005 max	Break edges 0.005 max	Dwg size	Scale Do not scale
3Rd angle projection	Drawing Number 092-131-0000-06	Rev	Sheet