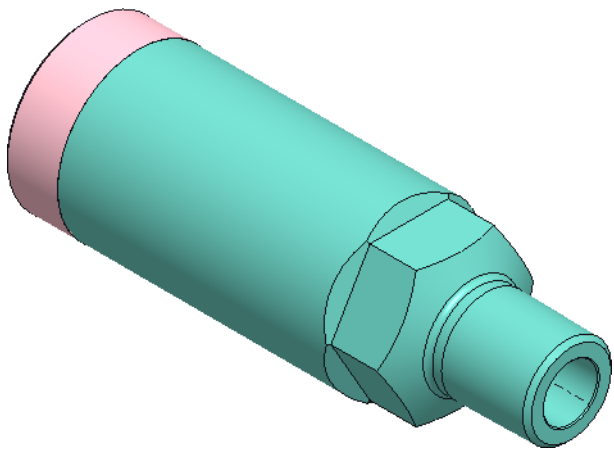


Design specification			
Nominal OD	1.5" (38.1mm)	Factory acceptance	API119G2
Total length	4.5" (114.3 mm)		
Pressure rating	4/10 KSI@300°F	SS316/17-4PH	DH1150

Nr.	Part number	Qty.	Part name	Note
1	102-20102-C	1	Inlet sub	
2	Z02490DV	1	O-Ring 024, 90D,Viton *	
3	Z02490DV	1	O-Ring 024, 90D,Viton *	
4	102-20053-C	1	Nose	
5	102-20022-C	1	Seal, check valve *	
6	102-20027-C	1	Retainer, seal	
7	102-20024-C	1	Spring, 0.072x1.12x0.976	
8	102-20021-C	1	Dart, check	



Inlet sub item # 1 is available with 3/4" NPT thread part # 102-20028-C and item # 4 with 3/4" NPT per 102-20027-C
Other material available upon request

ELC Energy Services LLC <small>Proprietary note The information contained herein is the confidential property of ELC Energy Services LLC and its affiliates. It is to be used only for the benefit of ELC and should not be reproduced or used for any other purpose without written consent of ELC Energy Services LLC.</small>	Material SS316		Title High pressure check valve 1.5 Inch			
	Heat treat NA		Unless otherwise specified			
	Coating NA		All angles 45°		X. +/- 0.0063"	Fractional +/- 1/64"
	Weight Lb		Thread entry/exit 45°		X.X +/- 0.025"	Angular +/- 0.5°
	Drw: ZS	Changes from previous revision denoted by Δ	Dimensions in inches	Dimensions in mm	X.XX +/- 0.010"	Surf. finish 0.125
	Ckd: RH		X.XXX +/- 0.005"		T.I.R. 0.005" max	
	App: MSJ		Corners R0.005 max	Break edges 0.005 max	Dwg size	Scale
	Date: 8/22/2024	3rd angle projection		Drawing Number 092-131-0000-04	Rev 3	Sheet 1