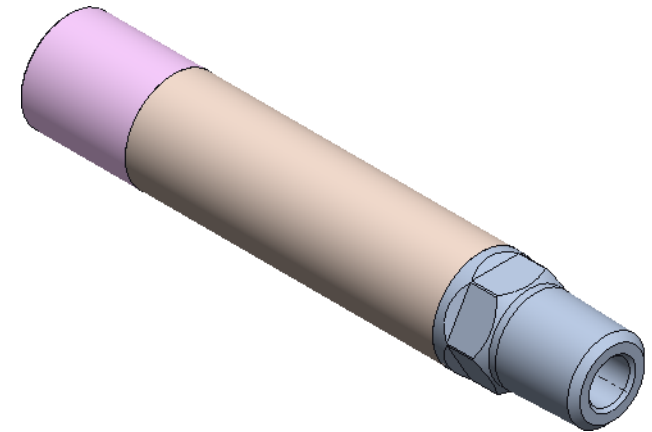


Sr	PART NUMBER	QTY	NAME	NOTES
1	102-10085-C	1	Upper sub	
2	Z01890DV	1	O, ring, 018, Viton, 90D	
3	Z01790DV	1	O ring, 017, Viton, 90D	
4	102-10031-C	1	Seal, check valve	
5	102-10122-C	1	Housing	
6	102-10121-C	1	Outlet sub	
7	102-10120-C	1	TC sleeve	
8	102-10119-C	1	TC insert	
9	Z211690DV	1	O-Ring 116 Viton 90D	
10	102-10098-C	1	Spring	
11	102-10091-C	1	TC check dart.prt	

Part number	Name	Note
102-10099-C	Velocity spring	Item # 10
102-10098-C	Positive spring	Item # 10



Design specification			
Nominal OD	1.00(25,04 mm)	Factory acceptance	API119G2
Total length	5.59"(142 mm)		
Pressure rating	10 KSI @ 300°F		

ELC Energy Services LLC

Proprietary note  
The information contained herein is the confidential property of ELC Energy Services LLC and its affiliates. It is to be used only for the benefit of ELC and should not be reproduced or used for any other purpose without written consent of ELC Energy Services LLC.

Material 17-4PH DH1150	
Heat treat NA	
Coating NA	
Weight Lb	
Drw: ZS	Changes from previous revision denoted by $\Delta$
Ckd: RS	
App: MSJ	
Date: 4/30/2024	

Title			
ELCZ-ISVCV check valve			
Unless otherwise specified			
All angles 45°		X. +/- 0.0063"	Fractional: +/- 1/64"
Thread entry/exit 45°		X.X +/- 0.025"	Angular +/- 0.5°
Dimensions in inches	Dimensions in ( ) are in mm	X.XX +/- 0.010"	Surf. finish 0.125
		X.XXX +/- 0.005"	T.I.R. 0.005" max
Corners R0.005 max	Break edges 0.005 max	Dwg size	Scale Do not scale
3Rd angle projection	Drawing Number 091-131-0008-09TC	Rev	Sheet