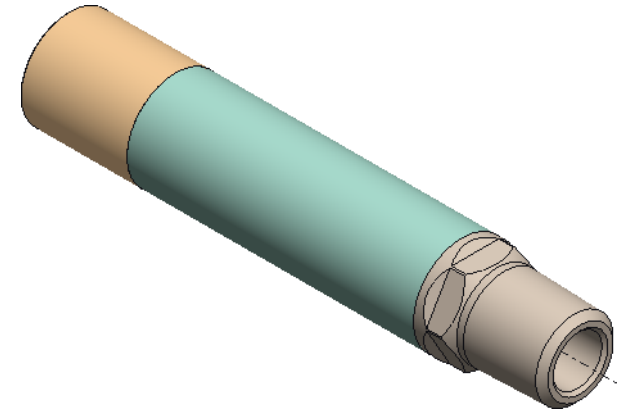


Sr	PART NUMBER	QTY	NAME	NOTES
1	102-10061-C	1	Upper sub	
2	Z01890DV	1	O, ring, 018, Viton, 90D	
3	Z01790D	1	O ring, 017, Viton, 90D	
4	102-10031-C	1	Seal, check valve	
5	102-10060-C	1	Housing check dart	
6	102-10062-C	1	Nose	
7	102-10040-C	1	Spring	
8	102-10037-C	1	Dart, check	
9	Z-2116090DV	1	O-Ring 2-116	



Part number	Name	Note
102-10040-C	Positive spring	Item # 7
102-10041-C	Velocity spring	Item # 7

Design specification		ELC Energy Services LLC	Material 17-4PH DH1150	Title S-1 check valve ELCZ-ISCVA				
Nominal OD	1.00(25,04 mm)	Factory acceptance AP119G2	Heat treat NA	Unless otherwise specified				
Total length	5.25"(133 mm)		Coating NA	All angles 45°	X. +/- 0.0063"	Fractional= /-1/64"		
Pressure rating	10 KSI @ 300°F		Weight Lb	Thread entry/exit 45°	X.X +/- 0.025"	Angular +/- 0.5°		
		<small>Proprietary note The information contained herein is the confidential property of ELC Energy Services LLC and its affiliates, it is to be used only for the benefit of LLC and should not be reproduced or used for any other purpose without written consent of ELC Energy Services LLC.</small>	Draw: ZS	Dimensions in inches	Dimensions in () are in mm	X.XX +/- 0.010"	Surf. finish 0.125	
			Cahnges from previous revis denoted by					X.XXX +/- 0.005"
			Ckd: RH	Corners R0.005 max	Break edges 0.005 max	Dwg size	Scale	Do not scale
			App: MSJ	3Rd angle projection	Drawing Number 091-131-0008-09A	Rev	Sheet	
			Date: 10/19/2023					