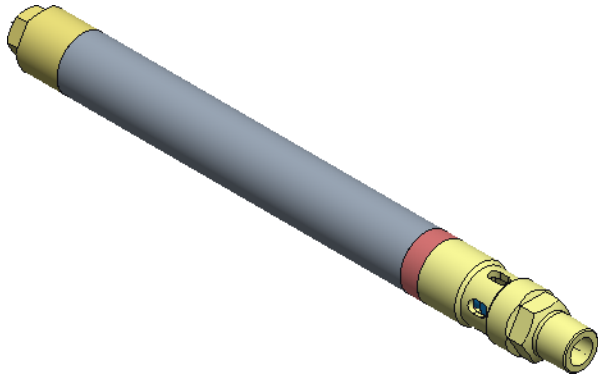


Sr	PART NUMBER	QTY	NAME	NOTES
1	102-20001-C	1	Plug, tail	
2	102-20009-C	1	Dome	
3	Z02290DV	1	O-Ring022, Viton, 90D	
4	X10001	1	Valve, Dillcore Nitrile*	
5	Z02390DV	1	O-Ring 023, 90DV	
6	102-20003-C	1	Housing, bellow	
7	BKP026TFM	2	Bkp ring 026	
8	Z02590DV	1	O-Ring025	
9	102-20008-C	1	Seal, fortress	
10	102-20005-C	1	Sub, inlet	
11	102-20017-C	1	Ring, retaining	
12	100-2SXXX-TC-15	1	Seat BC-TC-15	
13	Z21090DV	1	O-ring 210	
14	100-20100-AB	1	Bellow, AB,0.31, 3ply	
15	102-20004-C	1	Guide, bellow	
16	102-20007-C	1	Body,stem	
17	102-20065-C	1	Subassembly stem/ball, TC 0312	

Design specification			
Nominal OD	1.5" (38.1mm)	Factory acceptance	API9G2
Total length	16.15" (410.6 mm)	Max gas flow rate	6 mmscf/min
Port type	Square edge	Max liquid flow rate	2 BBL/min
Port sizes	0.187-0.5"	Validation tested	
Latch thread	NA	Setting retrieval	Tubing
Valve material	Monel 400/SS316	Quality control grade	API19G2
Seal material	Viton 90D	Functional testing grade	API19G2
Service	Standard/H2SCO2		
Gas lift mandrel	Conventional		
Pressure rating max	0-2800 PSI dome		
Temperature rating	300 F max		



For dome charging use part # 102-20016-C

Available port sizes shown on dwg # 102-20026-C

ELC Energy Services LLC <small>Proprietary note The information contained herein is the confidential property of ELC Energy Services LLC and its affiliates. It is to be used only for the benefit of ELC and should not be reproduced or used for any other purpose without written consent of ELC Energy Services LLC.</small>	Material	SS316	Title		
	Heat treat	NA	ELCZ-2C valve		
Coating	NA	Unless otherwise specified			
Weight	Lb	All angles 45°		X.X +/- 0.0063"	Fractional: +/- 1/64"
Drw:	ZS	Thread entry/exit 45°		X.X +/- 0.025"	Angular +/- 0.5°
Ckd:	MSJ	Dimensions in inches	Dimensions in () are in mm	X.XX +/- 0.010"	Surf. finish 0.125
App:	MSJ	Corners R0.005 max		X.XXX +/- 0.005"	T.I.R. 0.005" max
Date:	4/2/2025	Break edges 0.005 max	Dwg size	Scale	Do not scale
		3Rd angle projection	Drawing Number	032-121-0322-16	Rev 0 Sheet 1