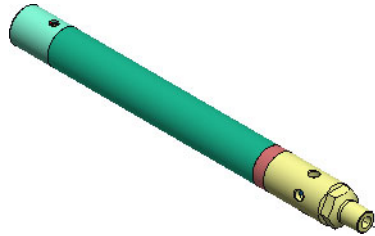


Item	Part number	Qty	Name	Note
1	102-20103-C	1	Dome head	
2	102-10141-C	1	Needle plug	
3	Z01090DV	1	O-Ring 010 90DV	
4	104-20009-R	1	1-16-NPT set screw	
5	BU025TFM	1	Ring bkp, 025, TFM	
6	Z02590DV	1	O-Ring025	
7	BU025TFM	1	Ring bkp, 025, TFM	
8	102-20002-C	1	Housing, dome	
9	102-20003-C	1	Housing, bellow	
10	BKP026TFM	1	Bkp ring 026	
11	Z02590DV	1	O-Ring025	
12	BKP026TFM	1	Bkp ring 026	
13	100-20100-AB	1	Bellow, AB,0.31, 3ply Inc625	
14	102-20004-C	1	Guide, bellow	
15	102-20008-C	1	Seal, fortress	
16	102-20007-C	1	Body, stem	
17	102-20029-C	1	Nose	
18	102-20017-C	1	Ring, retaining	
19	100-2SXXX-TC-15	1	Seat BC-TC-15	
20	Z21090DV	1	O-ring 210	
21	102-20065-C	1	Subassembly stem/ball, TC 0312	

Design specification			
Nominal OD	1.5" (38.1mm)	Factory acceptance	API9G2
Total length	16.30" (414 mm)	Max gas flow rate	6 mmscf/min
Port type	Square edge	Max liquid flow rate	2 BBL/min
Port sizes	0.187-0.5"	Validation tested	
Latch thread	NA	Setting retrieval	Tubing
Valve material	Monel 400/SS316	Quality control grade	API19G2
Seal material	Viton 90D	Functional testing grade	API19G2
Service	Standard/H2SCO2		
Gas lift mandrel	Conventional		
Pressure rating max	0-2800 PSI dome		
Temperature rating	300 F max		



Item # 22 available stem/port sizes shown on dwg # 102-20026-C

For dome Nitrogen charging use part # 102-20100-C

<b>ELC Energy Services LLC</b> <small>Proprietary note The information contained herein is the confidential property of ELC Energy Services LLC and its affiliates. It is to be used only for the benefit of ELC and should not be reproduced or used for any other purpose without written consent of ELC Energy Services LLC.</small>	Material:316SS/17-4PH DH1150	Title ELCZ-2C valve, with HPTP tail plug		
	Heat treat: NA	Unless otherwise specified		
Coating: NA	All angles 45°		X.X +/- 0.0063"	Fractional: +/- 1/64"
Weight Lb	Thread entry/exit 45°		X.X +/- 0.025"	Angular +/- 0.5°
Drw: ZS	Changes from previous revision denoted by $\Delta$	Dimensions in inches	Dimensions in mm	X.XX +/- 0.010"
Ckd: RDH		X.XXX +/- 0.005"	Surf. finish 0.125	
App: MSJ		3Rd angle projection	Scale	Do not scale
Date: 11/7/2024		Drawing Number	032-121-0321-05	Rev 3
		Sheet	1	