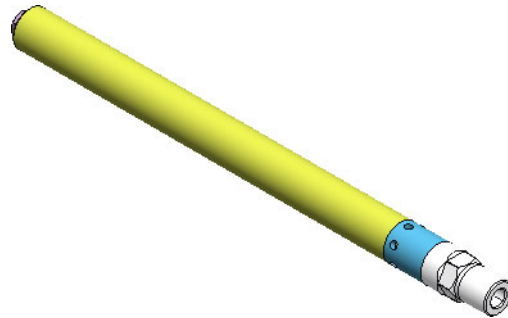


| Nr. | Part number | Qty | Part name | Note |
|-----|----------------|-----|----------------------------|------|
| 1 | 102-10058-C | 1 | Tail plug | |
| 2 | BKPRING013 | 1 | bkpring013.prt | |
| 3 | Z01290D | 1 | O ring, 012, Viton, 90D | |
| 4 | BKPRING013 | 1 | bkpring013.prt | |
| 5 | 102-10057-C | 1 | Housing, dome | |
| 6 | 102-10059-C | 1 | Crush gasket | |
| 7 | X10001 | 1 | Valve, Dillcore, Nitrile | |
| 8 | 102-10003-C | 1 | Sub, inlet | |
| 9 | 102-XXXX-C | 1 | BellowAB 0.31 3Ply M400 | |
| 10 | Z01690DV | 1 | O ring 016, 90D, Viton* | |
| 11 | 102-10006-C | 1 | Bkp ring 017 TFM* | |
| 12 | 102-10006-C | 1 | Bkp ring 017 TFM* | |
| 13 | 102-10004-C | 1 | Guide, bellow | |
| 14 | 102-10014-C | 1 | Subassembly stem,XXX,TC | |
| 15 | 102-10007-C | 1 | Seal, fortress | |
| 16 | 102-10009-C | 1 | Housing, seat | |
| 17 | 100-10008-C | 1 | Ring, retaining,1.0 Copper | |
| 18 | 100-S1XXX-TC-1 | 1 | Seat, 1.0, TC | |
| 19 | Z11175DV | 1 | O ring III, 90D, Viton | |

| Design specification | | | |
|----------------------|-----------------|--------------------------|-------------|
| Nominal OD | 1.0" (25.4mm) | Factory acceptance | API9G2 |
| Total length | 13.76(349.5 mm) | Max gas flow rate | 2 mmscf/min |
| Port type | Square edge | Max liquid flow rate | 1 BBL/min |
| Port sizes | 1/8-3/8" | Validation tested | |
| Latch thread | NA | Setting retrieval | Tubing |
| Valve material | Monel 400/SS316 | Quality control grade | API19G2 |
| Seal material | Viton 90D | Functional testing grade | API19G2 |
| Service | Standard/H2SCO2 | | |
| Gas lift mandrel | Conventional | | |
| Pressure rating max | 0-2800 PSI dome | | |
| Temperature rating | 300 F max | | |



| | | | | | | | |
|--|-----------------|--|---|--|-----------------------------|-----------------------|--------------------|
| ELC Energy Services LLC <small>Proprietary note The information contained herein is the confidential property of ELC Energy Services LLC and its affiliates, it is to be used only for the benefit of LLC and should not be reproduced or used for any other purpose without written consent of ELC Energy Services LLC.</small> | Material: SS316 | | Title: ELCZ-IC valve with standard tail plug | | | | |
| | Heat treat; NA | | Unless otherwise specified | | | | |
| | Coating: NA | | All angles 45° | | X.X +/- 0.0063" | Fractional= +/- 1/64" | |
| | Weight Lb | | Thread entry/exit 45° | | X.X +/- 0.025" | Angular +/- 0.5° | |
| | Drw: ZS | | Dimensions in inches | | Dimensions in () are in mm | X.XX +/- 0.010" | Surf. finish 0.125 |
| | Ckd: RH | | Corners R0.005 max | | Break edges 0.005 max | X.XXX +/- 0.005" | T.I.R. 0.005" max |
| | App: MSJ | | 3Rd angle projection | | Dwg size | Scale | Do not scale |
| | Date: 8/30/2023 | | Drawing Number | | 031-121-0321-08 | Rev | Sheet |
| | | | | | | | |

Changes from previous revision denoted by